



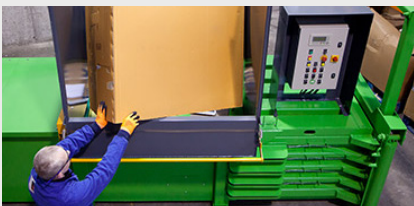
## H50 Standard Closed-End Horizontal Baler

Offering higher volume processing and more options than vertical mill-size balers, the H50 is ideal for baling large quantities of cardboard, plastic, PET bottle, textile, paper, aluminium and dry waste as well as straw.



Recommended for high-volume users, recycling centres, waste contractors, distribution centres, supermarkets.

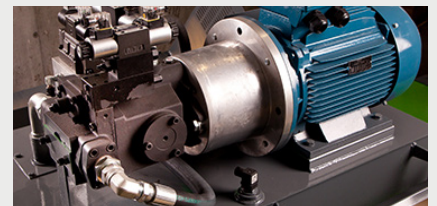
## FEATURES



Heavy-duty V-shaped shear bar for cutting difficult materials



Semiautomatic guillotine-style discharge allows for full ejection of bale



15-kilowatt motor for efficient bale compaction and power consumption



Automatic cycle with anti-jam programme



4-wire easy-tie system ensures bales stay compacted



"Bale Full" indicator light helps ensure safe operation at multi-user sites



## SPECIFICATIONS

- ✓ Bale size: 750mm H x 1100mm W x 1000mm D (variable)
- ✓ Bale weight: 350–550 kg
- ✓ Cycle time: 50–60 seconds
- ✓ Compaction force: up to 50 tonnes
- ✓ Dimensions: 2130mm H (excluding hopper) x 5990mm W x 1905mm D
- ✓ Full bale discharge
- ✓ Automatic start up
- ✓ PLC type controller with LED read out
- ✓ Power: 3 phase 380/440 V 15 Kw motor
- ✓ Fill opening: 1310mm x 1100mm
- ✓ Dual pressure select
- ✓ 12mm high carbon steel floor and top of press plate
- ✓ 40mm high carbon discharge door
- ✓ Machine weight: approximately 7000 kg
- ✓ Noise level: 80 dB
- ✓ 300 Lt oil reservoir



## OPTIONS

- Diesel drive system
- Conveyor system
- Perforator 2 models
- Various hoppers
- Hook-lift mounting system bin
- Bin lift system with cages
- Marine specification
- Annual service contract
- Remote maintenance
- 18 kW 3 phase 380/440 V power pack